

Setting up Windows Firewall Exceptions for iLaw

This guide is based on using XP Windows Firewall. Exceptions for iLaw are to be made on the SERVER.

Start by accessing Windows Firewall by clicking on **Start - Control Panel - Windows Firewall**.

Click on the **Exceptions** tab.

There are two allowances to be made. These are:

1. ALS License Server
2. SQL Server

1. Setting an allowance for the ALS Licence Server

This allowance can be set up for either the program or the ports but both are recommended.

First Option is to add the Program. In the exceptions tab click on **Add Program** and in the **Add a Program** window click on **Browse** and navigate to here:

C:\program files\ALS\AnyaLicenseServer.exe

Click on the **Open** button. The ALS Licence server uses UDP and TCP Ports two different ports so an exception should be added for both even though it is likely that one will suffice.

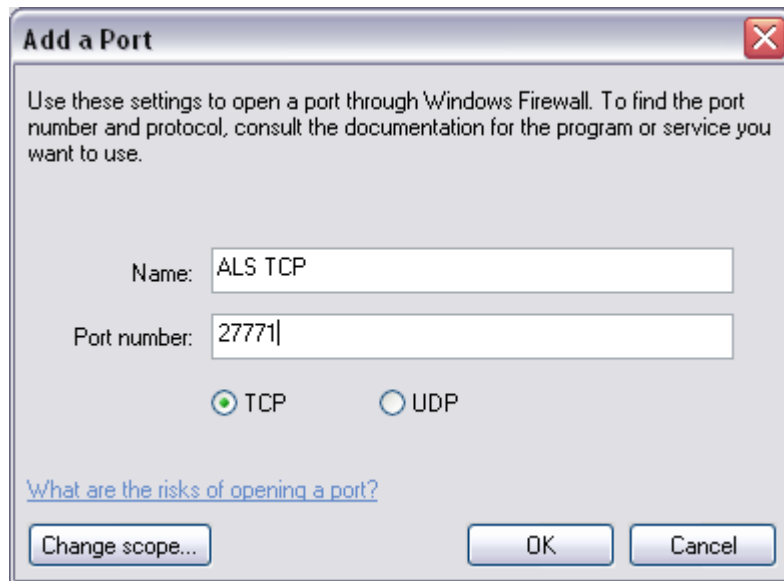
Add the TCP Port.

Click on **Add Port**. When the Add a Port window opens you can enter the **Name**, **Port Number** and select either TCP or UDP.

Name: ALS TCP

Port Number 27771

Select TCP



After clicking OK you can enter the exception for the UDP Port following the same method but with the following settings.

Name: ALS UDP
Port Number 27771
Select UDP

2. Setting an allowance for the SQL Server

To make firewall exceptions for the SQL Server you will need to add a Program and a UDP Port. Click on **Add Program** in the **Exceptions** tab in Windows Firewall.

Navigate to the following and select the sqlserver.exe

C:\Program Files\Microsoft SQL Server\MSSQL\$ILAW\Binn\sqlservr.exe

There is no need to add a TCP Port but add a UDP Port with the following details

Name: SQL Browser
Port Number 1434
Select UDP
Click OK